



# Roof Angel<sup>TM</sup>

HORIZONTAL LIFELINE SYSTEM

Specialist and Unique Solutions to Height Safety Issues.  
We are here when nothing else works.



## Who is Bettersafe International?

We are specialists in working at height. Nothing else. No dilution, no separation, no compromise.

With over 40 years of experience within our walls we offer our partners high quality, industry leading fall protection equipment and unique solutions. Couple this with extensive training courses, exceptional quotation and technical support, and a very rapid response to required solutions, you have a winning formula to partner with.

## What does Bettersafe International do?

Fall protection. It's what we do at Bettersafe International. It's how we do it that is different.

Unlike the majority of suppliers our single focus is ensuring that our clients, you, get the product you need when you need it. This is done through large stocks and an open ear. We are relaxed and responsive, we always answer our phones and we are always willing to assist in whatever means we can.

For far too long product developers have been listening to the market through the ears of manufacturers. The voices of the users, the installers, the safety managers and building owners seem to have been lost in the wind.

Bettersafe International are doing things differently. We are listening.

We work alongside development partners to ensure that the products we deliver you are already field tested and designed for the market into which they are being placed. We offer a product developed for the market into which is to be used, and we price it to win. Simple as that.

## What are we looking for in partners?

We don't want "just another client". We are always on the look out for those people and companies in the industry who are of a like mind and disillusioned with their current supplier. People who are looking for something a little different. People like you.

If you are reading this then you are at least a little interested in something new, something different. You are already looking with at least one eye at what is happening and possibly looking to join a network of companies who want to change the face of fall protection for the better.

## Where have we been?

We have worked alongside some of the leading companies in the construction industry, with installations of our products being in some of the most prestigious of locations, such as football stadiums, airports and Government buildings across the globe.

We have key installations in Germany, Netherlands, Belgium, France, United Kingdom, Spain, Australia, United States, Canada, Norway, Sweden, Denmark, Eire, Italy.

# Roof Angel Benefits

The Roof Angel Horizontal Lifeline System provides users with a total fall protection solution through continuous attachment whilst negotiating intermediate points along the system. Users can detach and re-attach at any point.

Roof Angel is designed so that it is able to accommodate corners and various building shapes; so that it is aesthetically flexible, with low profile posts and comprehensive fixing options suitable for all roof types including standing seam, composite, built up, secret fix and membrane roofs; and so that it conforms to EN795 (2012) Class A2 & C.

## Fall Arrest and Fall Restraint

The Roof Angel Horizontal Lifeline is an anchorage system designed to protect one or more people working at height. The lifeline can be used as a Fall Arrest system and also a Fall Restraint system, further minimising risk to the end users.

## Complete 360 degree freedom

The Roof Angel Horizontal Lifeline enables the end user to connect to the line to move freely without needing to disconnect from it to accomplish any movement. They are able to pass the intermediate cable guides and corners automatically.

## Permanently attached

Roof Angel is permanently attached to the structure, can be replaced if deployed without removal from the roof and is corrosion-free, offering value-for-money longevity.

## 8mm cable-based anchorage system

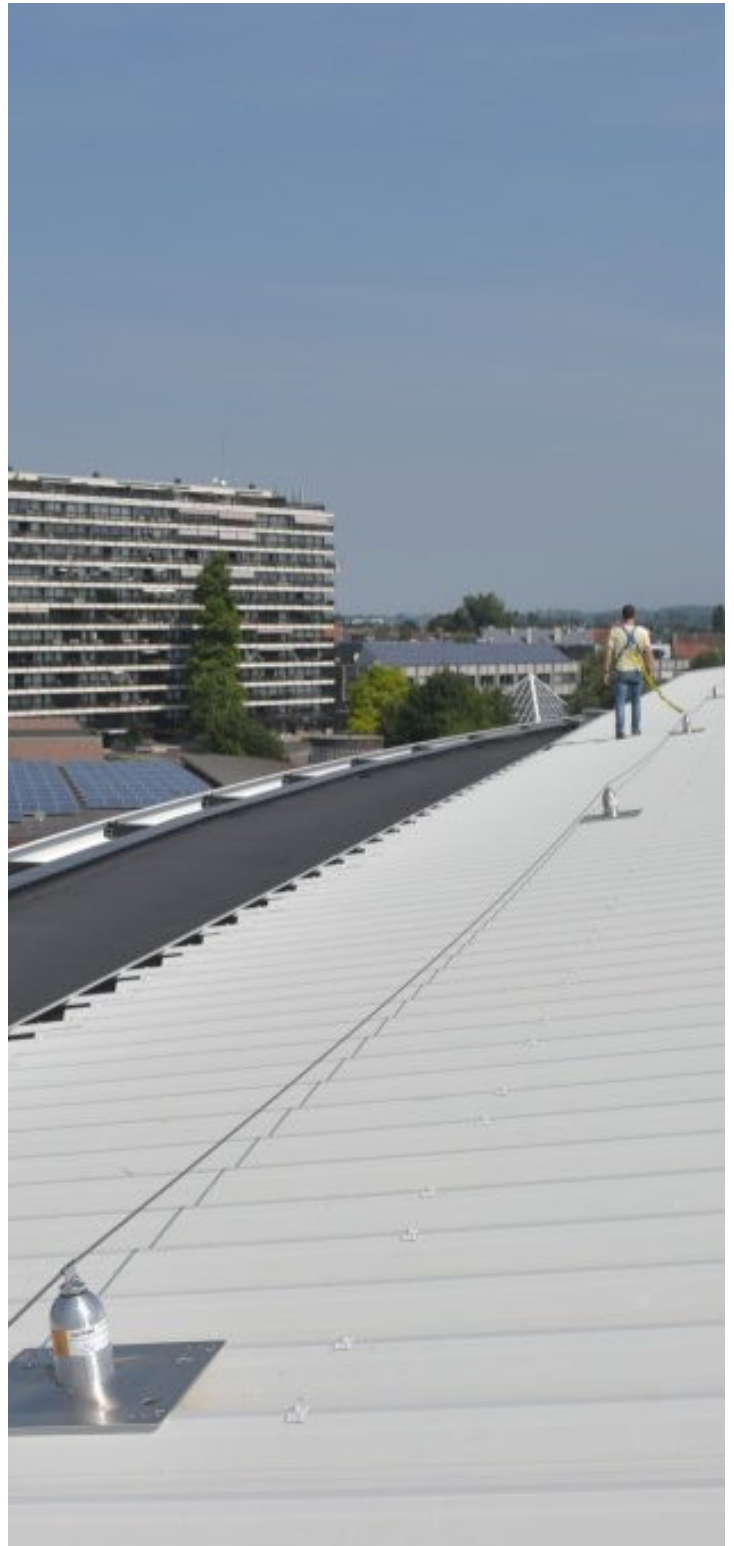
Incorporating force absorption technology to minimise the loading passed to the structure in the event of a fall.

## Computer calculation package

Our advanced computer calculation package guarantees that all installations are within the safe working limits of Roof Angel. This bespoke calculation software ensures the most effective tailored installation options.

## Fully tested and certified

Roof Angel complies with all current European standards and requirements. It is independently tested by SATRA and is certified to EN795:2012 Type A & C. System critical components are serial numbered.





## Full technical support

We have devised and can deliver a comprehensive programme of Training Courses for your team. Site specific layout drawings can be provided as a complete package if required.

## Applications

With the Roof Angel Horizontal Lifeline, we have designed a system that fixes permanently to the roof structure, allowing for all types of work at height to be carried out in complete safety.

Roof Angel is ideal for use in every sector with height safety objectives.

Its advanced technology combined with a focus on delivering longevity of use makes Roof Angel the most cost-effective solution for all your fall protection needs.

## Designed without compromise...

The design of the Roof Angel anchors combined with its superior shock-absorbing materials means that the system can be top-fixed to most modern roof constructions.

It operates horizontally and along inclines and can easily accommodate two simultaneous users.

There is no compromise to the integrity of the roof and, in the event of a fall, there is minimal damage to the roof sheets as all loads generated on the system are greatly reduced thanks to our unique design.

## Roof Angel is suitable for:

### Standing seam roofs

Utilising a seam clamp, there is no need for roof penetration.

### Membrane roofs

Roof Angel can be fitted on all the major membrane roofing systems including single-ply and bituminous on steel, concrete and timber decks.

### Trapezoidal roofs

Roof Angel can be fitted on all the major composite roofing systems. The posts are fixed to the roof sheet using structural rivets.

## Reduced waste, reduced install time, increased productivity

Roof Angel is an 8mm cable based horizontal lifeline system, comprising of advanced absorption technology based on materials developed for the aerospace industry. Users will find traversing the system exceptionally uncomplicated through the use of Roof Angel's ergonomically designed intermediate guide brackets, corner assemblies and various fixings for different roof types.

Roof Angel is independently tested by SATRA to EN795:2012 and CEN/TS 16415:2013 for a variety of installation types.

The patented Roof Angel Absorption System is a three-stage system, using deforming base plates and a patented Polyurethane and stainless steel absorber which is incorporated into the post modules for the top fix system. For wall mounted, or rigid post mounted installations of Roof Angel in line absorbers are used.

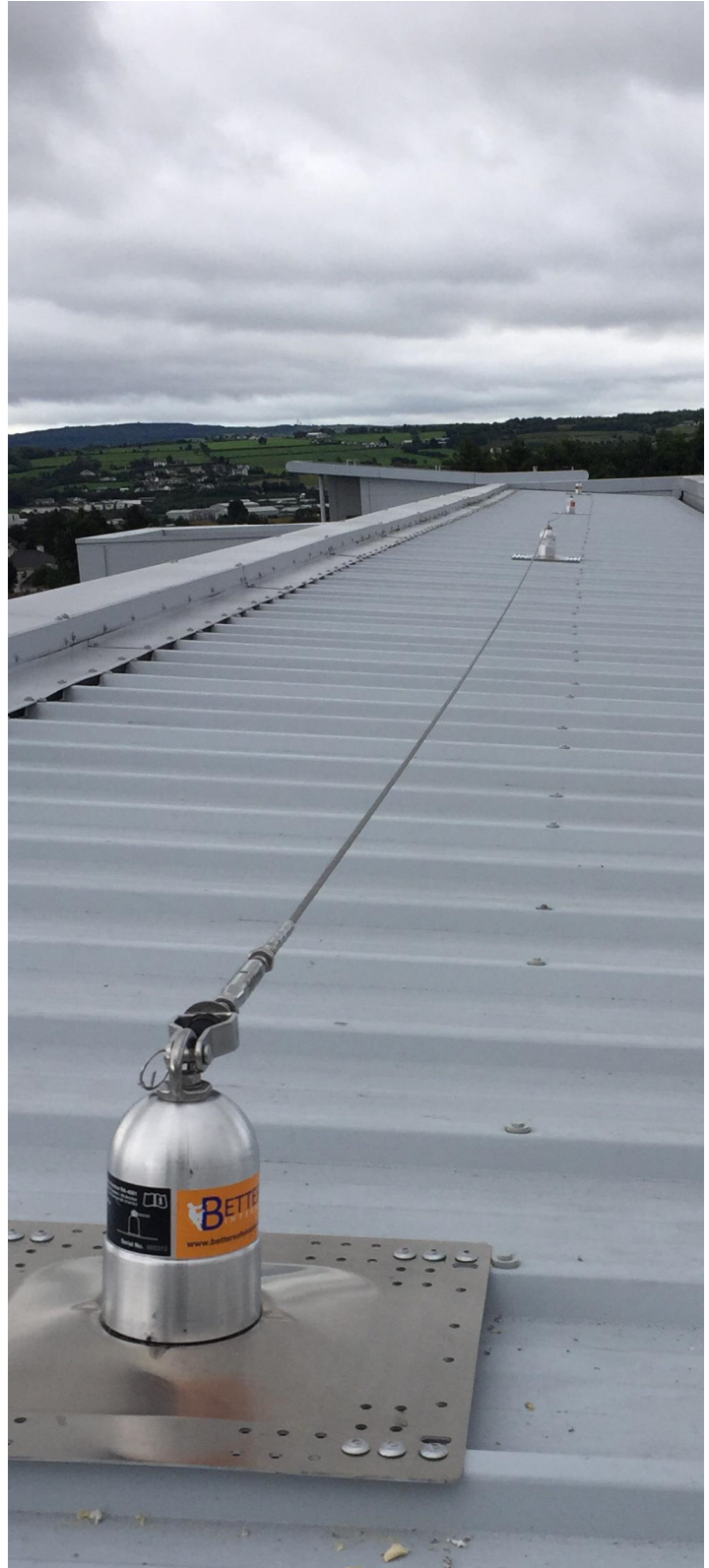
Created with industry partners for rapid installation, ease of user acceptance and low environmental impact the Roof Angel system is designed with the highest quality, lowest corrosion materials, designed to last.

Roof Angel is manufactured from a combination of stainless steel, aluminium and Polyurethane, giving Roof Angel an extended lifespan when compared with other systems, and in line with the lifespan of the roofing systems to which it is installed.

Roof Angel posts come pre-assembled from the factory, complete with the RA-2006 End Anchor and RA-2003 intermediate guide bracket already installed, saving time on site.

Roof Angel is delivered to site for you with minimal packaging to reduce the environmental impact created by excessive waste. With a pallet box containing the posts and cable, and with only fixings box and protection sleeves on the posts as additional unwanted material, the removal of these materials post installation is massively reduced.

Our extensive testing procedures are designed to be in excess of the requirements of the standards. From additional forces to reduced fixings we test in real world and in adverse scenarios.



# Roof Angel Applications

Roof Angel is ideal for use in every sector with height safety objectives. Roof Angel can be installed on every type of roofing system, from trapezoidal systems to single ply membranes, from concrete to traditional tiled roofing areas.

### Membrane Roofing



### Bitumen Roofing



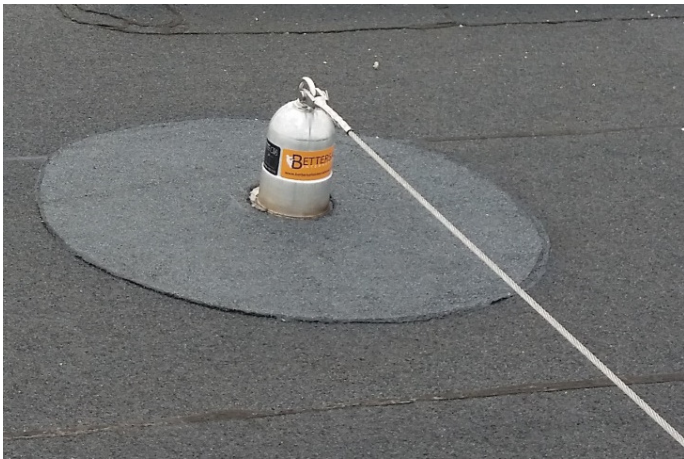
### Trapezoidal Roofing



### Standing Seam Roofing



### Concrete Roofing



### Tiled Roofing

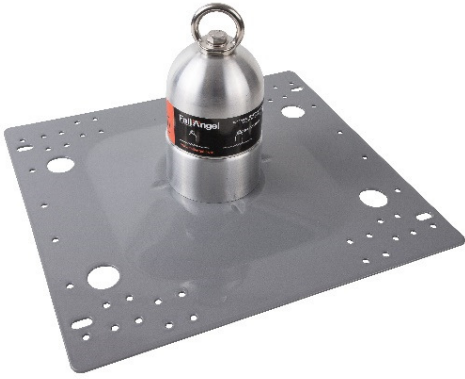


# Roof Angel Components

The components used in the assembly of the Roof Angel Horizontal Lifeline System are manufactured from the highest quality Stainless Steel, Aluminium and Polyurethane materials, and are designed to be the easiest in the market to install and use.

End Anchor

*Shown on PVC Coated Base*



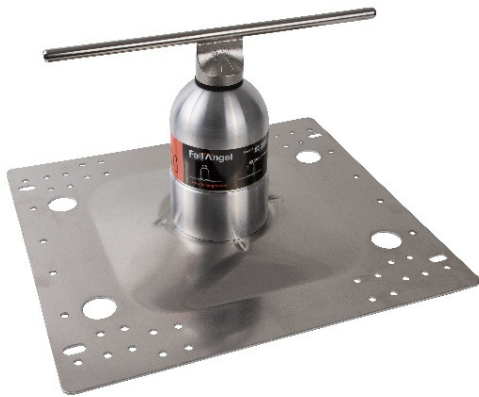
Corner Unit

*Shown on Uncoated Base*



Vary Corner Unit

*Shown on Uncoated Base*



Intermediate Unit

*Shown on PVC Coated Base*



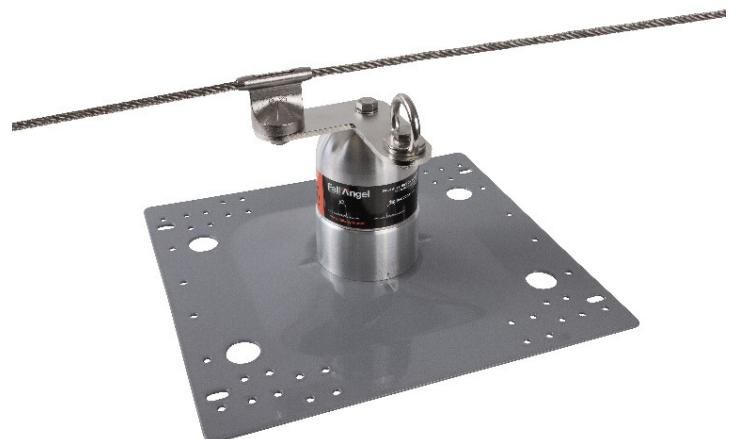
Green Roof Assembly

*Available in various heights to suit*



Thro Plate Assembly

*Shown on PVC Coated Base*





UK  
Riverside  
Mountbatten Way  
Congleton  
Cheshire  
CW12 1DY  
United Kingdom

t | + 44 (0) 1260 217 437

NETHERLANDS  
Azewijnseweg 12 SF  
4214 KC Vuren  
The Netherlands

t | + 31(0) 183 820 280

[info@bettersafeinternational.com](mailto:info@bettersafeinternational.com)  
[www.bettersafeinternational.com](http://www.bettersafeinternational.com)